

THIS DRAWING IS UNPUBLISHED. RELEASED FOR PUBLICATION NOV ,2006.

© COPYRIGHT 2006 BY TYCO ELECTRONICS CORPORATION. ALL RIGHTS RESERVED.

LOC	DIST	REVISIONS			
P	LTR	DESCRIPTION	DATE	DWN	APVD
	B	ECR-07-007400	29/03/07	AM	FWK

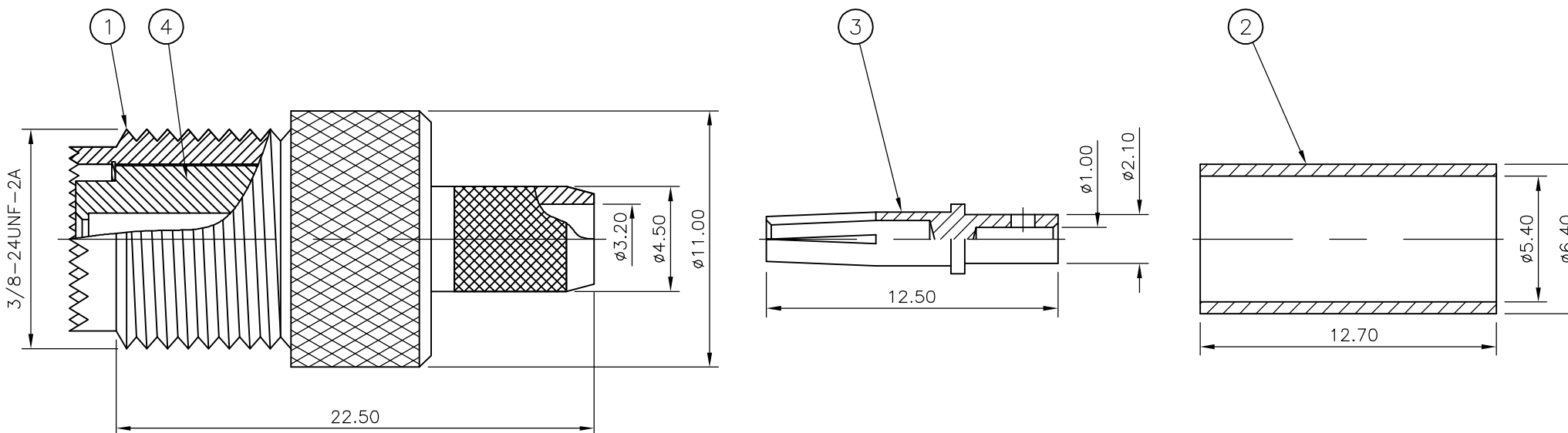
NOTES

- 1 SINGLE PACK IN ACCORDANCE WITH AMP SPEC 107-3275
- 2 100 PER BOX ACCORDANCE WITH AMP SPEC 107-3275
- 3 NICKEL PLATING
- 4 GOLD PLATING
- 5. ELECTRICAL CHARACTERISTICS

FREQUENCY RANGE:	DC - 2 GHz
NOMINAL IMPEDANCE:	50 Ohm
INSULATION RESISTANCE:	5000 MOHMS
WORKING VOLTAGE:	335 V
DIELECTRIC WITHSTAND VOLTAGE:	1000 V
CONTACT RESISTANCE:	
CENTRE CONTACT:	2.5 mOHMS
OUTER CONTACT:	N/A
VSWR @ 3GHz:	1.25:1
INSERTION LOSS dB @ x 1.5 GHz:	N/A
- 6. MECHANICAL CHARACTERISTICS

COUPLING NUT PROOF TORQUE:	N/A
CABLE RETENTION FORCE:	170 N
DURABILITY:	50 Cycles Min
- 7. ENVIRONMENTAL CHARACTERISTICS

OPERATING TEMPERATURE:	-55 to +85 DegC
------------------------	-----------------
- 8. FOR TECHNICAL DATA REFER TO YOUR LOCAL TYCO ELECTRONICS SALES OFFICE
- 9. ALL DIMENSIONS ARE NOMINAL FOR REFERENCE ONLY UNLESS OTHERWISE STATED



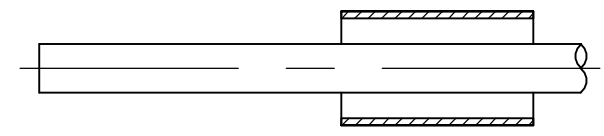
QTY	QTY PER ASSY	MATERIAL	DESCRIPTION	ITEM
1	1	POM	INSULATOR	4
1	1	BRASS	CONTACT	3
1	1	ZINC ALLOY	FERRULE	2
1	1	BRASS	BODY	1
5	15			0

THIS DRAWING IS A CONTROLLED DOCUMENT.		DWN J.SANDWELL 16NOV06		Tyco Electronics Corporation Bideford, UK, EX39 4HE													
DIMENSIONS: mm		CHK S.PARLOW 16NOV06															
TOLERANCES UNLESS OTHERWISE SPECIFIED:		APVD F.WHEELER-KING 16NOV06		NAME													
<table border="0"> <tr><td>0 PLC</td><td>± -</td></tr> <tr><td>1 PLC</td><td>± -</td></tr> <tr><td>2 PLC</td><td>± -</td></tr> <tr><td>3 PLC</td><td>± -</td></tr> <tr><td>4 PLC</td><td>± -</td></tr> <tr><td>ANGLES</td><td>± -</td></tr> </table>		0 PLC	± -	1 PLC	± -	2 PLC	± -	3 PLC	± -	4 PLC	± -	ANGLES	± -	PRODUCT SPEC		M-UHF STR JK HEX RG58C/U, 141A/U, URM43, 76, KX15	
0 PLC	± -																
1 PLC	± -																
2 PLC	± -																
3 PLC	± -																
4 PLC	± -																
ANGLES	± -																
MATERIAL SEE TABLE		FINISH SEE TABLE															
SEE TABLE		SEE TABLE		RESTRICTED TO													
CUSTOMER DRAWING		WEIGHT -		SIZE A3													
		APPLICATION SPEC SEE SHEET 2		CAGE CODE 00779													
		DRAWING NO C-1814819		DRAWING NO													
		SCALE NTS		SHEET 1 OF 2													
				REV B													

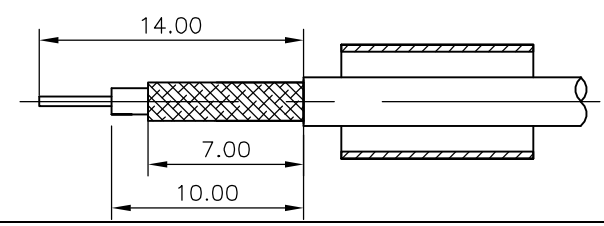
THIS DRAWING IS UNPUBLISHED.		RELEASED FOR PUBLICATION NOV ,2004.		LOC	DIST	REVISIONS					
© COPYRIGHT 2006 BY TYCO ELECTRONICS CORPORATION. ALL RIGHTS RESERVED.				E	B	P	LTR	DESCRIPTION	DATE	DWN	APVD
							-	SEE SHEET 1	-	-	-

ASSEMBLY INSTRUCTION
RG58C/U, 141A/U, URM43, 76, KX15

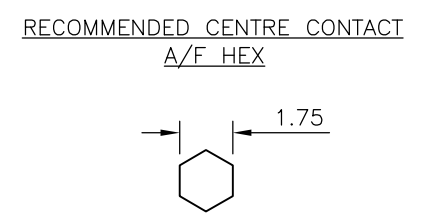
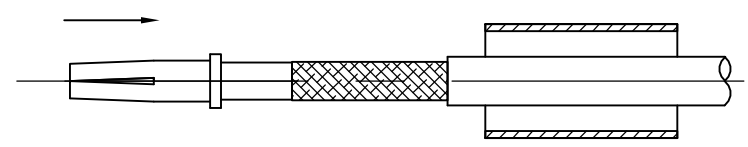
STEP 1
1. SLIDE METAL CRIMP FERRULE OVER CABLE



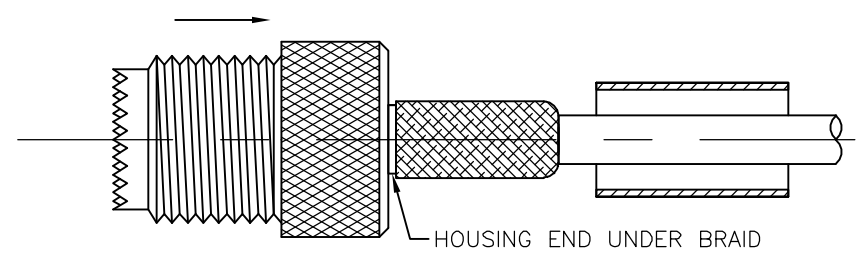
STEP 2
1. STRIP CABLE TO DIMENSIONS AS SHOWN



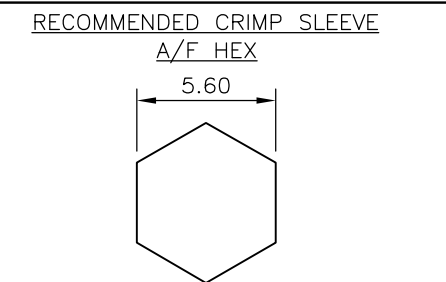
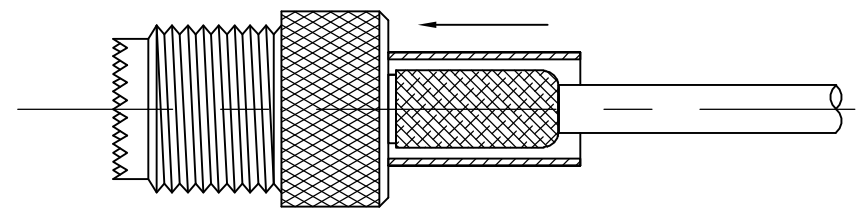
STEP 3
1. FIT CONTACT OVER CENTRE CONDUCTOR TO BUTT AGAINST DIELECTRIC.
2. CRIMP USING TOOL AS NOTES ON PAGE 1.



STEP 4
1. PRESS SUB-ASSEMBLY INTO BODY, UNTIL CONTACT IS FULLY LOCATED BY AN AUDIBLE CLICK.
2. ENSURE THAT KNURLED HOUSING INSERTS BETWEEN THE DIELECTRIC AND CABLE BRAID.



STEP 5
1. SLIDE CRIMP FERRULE ALONG THE CABLE UNTIL IT BUTTS AGAINST THE HOUSING BODY.
2. CRIMP USING TOOL AS NOTED ON PAGE 1.
3. CRIMP DIMENSION AS SHOWN.



THIS DRAWING IS A CONTROLLED DOCUMENT.		DWN	J.SANDWELL	16NOV06	tyco Electronics	Tyco Electronics Corporation	
		CHK	S.PARLOW	16NOV06		Bideford, UK, EX39 4HE	
		APVD	F.WHEELER-KING	16NOV06	NAME	M-UHF STR JK HEX	
		PRODUCT SPEC			RG58C/U, 141A/U, URM43, 76, KX15		
		APPLICATION SPEC			SIZE	CAGE CODE	DRAWING NO
		WEIGHT			A3	00779	C-1814819
		CUSTOMER DRAWING		SCALE	NTS	SHEET	2 OF 2
						REV	B

DIMENSIONS:	TOLERANCES UNLESS OTHERWISE SPECIFIED:
mm	
	0 PLC ± -
	1 PLC ± -
	2 PLC ± -
	3 PLC ± -
	4 PLC ± -
	ANGLES ± -
MATERIAL	FINISH
SEE TABLE	SEE TABLE